

# FLEETWOOD

Hydrographic data acquired with Norbit Winghead echo sounder and positioned with RTK GNSS & SBET.

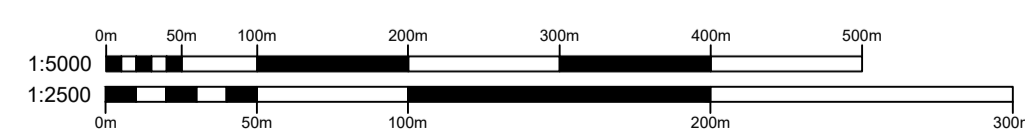
All depths are in metres relative to Admiralty Chart Datum.

Admiralty Chart Datum is 4.90 metres Below Ordnance Datum (Newlyn).

UK National Grid lattice and positions are plotted on this chart.

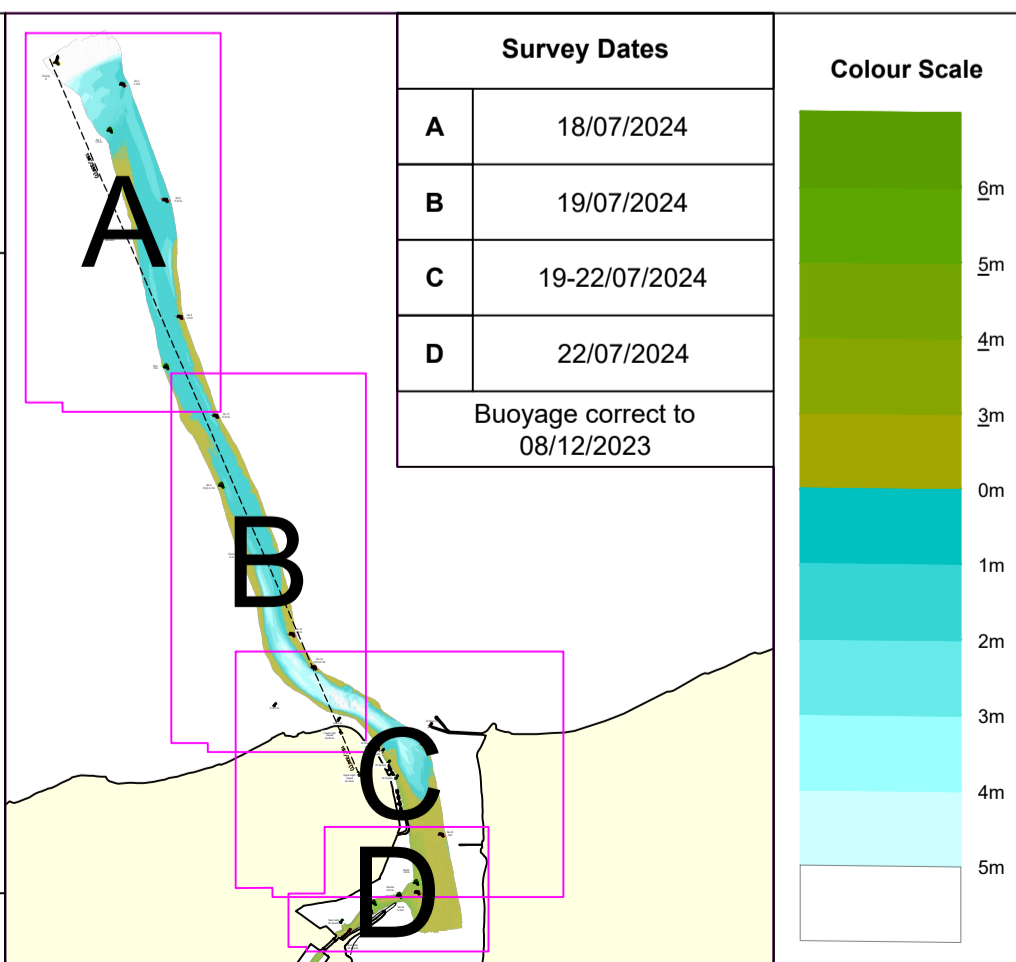
Data correct at date of survey. Mariners are advised that due to shifting beds and high sediment load of the River Wyre and Morecambe Bay no warranty is afforded that such data can be relied upon and further, no responsibility can be accepted by UKD for any inaccuracy in the Chart or omission therefrom.

This chart contains OS MasterMap data. © Crown copyright. All rights reserved. 2023. Licence no. 0100031673



Drawing Number: 20240718FC24

Scales correct when plotted at A1



### Survey Dates

A	18/07/2024
B	19/07/2024
C	19-22/07/2024
D	22/07/2024

Buoyage correct to 08/12/2023

### Colour Scale

